

TESTIMONIAL REFERENCE LETTER

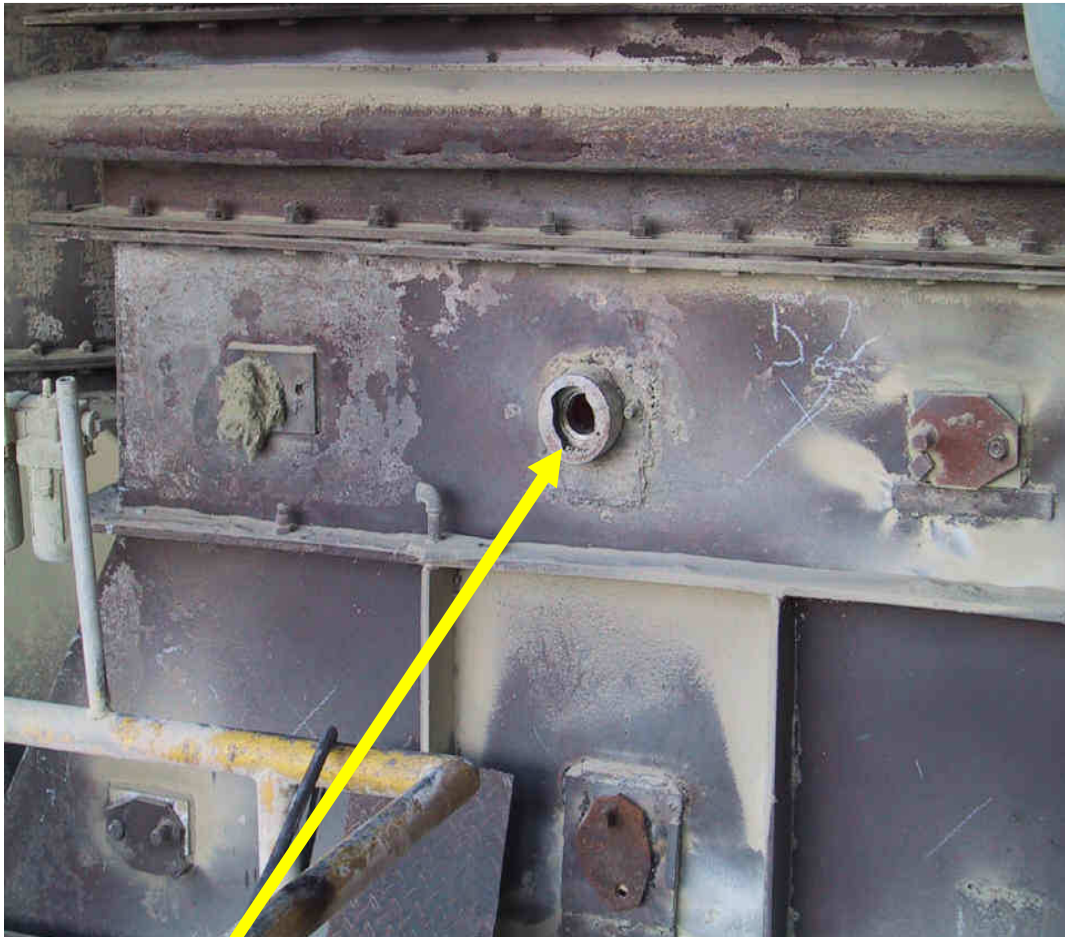
TO: Cardox International Limited
ATT: John Hodson

Dear John,

We have now installed all the Cardox Sockets with no disruption to production onto the preheater and we are pleased to report Cardox is working very effectively and everyone is very impressed with the performance and with the System.

I would be pleased to furnish references to any interested cement plants.

Best regards
Rene D. Garcia
Pyro Processing Manager
Union Cement Corporation
Davao City
Philippines
E-mail: rdg.ducc@phinma.com.ph
Fax:: 00-63-82-238-0123



Cardox Socket installed on preheater tower. Build-up has accumulated in this area of the preheater.



The Cardox Tube is clamped in the Tube Holder and simply inserted through the Socket into the build-up and secured. The Tube is then activated.



The Tube and Holder are removed from the Socket to reveal the build-up has been cleared. The Sealing Plug (pictured to the right of the Socket) is then inserted into the Socket.



Plant Engineers give the 'thumbs up' for the Cardox System. The versatile System is easily installed and provides the most efficient, reliable and cost effective method of clearing build-ups and blockages. Photo depicts the compact Cardox Tube Recharging Unit.