

CARDOX FOR BLOCKAGE PROBLEMS

EC The much improved CARDOX system is reportedly making a name for itself in the cement industry as the 'most efficient blockage and build-up clearing method on the market'.

EC Das erheblich verbesserte Cardox-System hat sich Berichten zufolge in der Zementindustrie einen guten Ruf als die 'effizienteste Freilegungsmethode bei blockierten Zementleitungen auf dem Markt' erarbeitet.

EC Le système Cardox a subi de nombreuses améliorations et se fait une réputation d'excellence au sein de l'industrie du ciment comme étant 'la méthode de suppression des blocages et des accumulations la plus efficace sur le marché'.

With many cement plants allegedly complaining that their 'air cannon' systems are simply not 'man enough' to fully clear build-ups because of high losses in efficiency, Cardox guarantees maximum power each and every time it is used. Thus, maximum efficiency is always achieved. Cardox produces an instantaneous, safe, but powerful blast of carbon dioxide, with each tube being able to remove up to 3t of material, right where the build-up is.

Other techniques for clearing blockages and build-ups in hot processing lines require the kiln to be shut down and cool, which obviously wastes valuable production time and of course money. With Cardox, there is no need to shut down the kiln, and the versatile Cardox Tubes can be used in all areas of the production line.

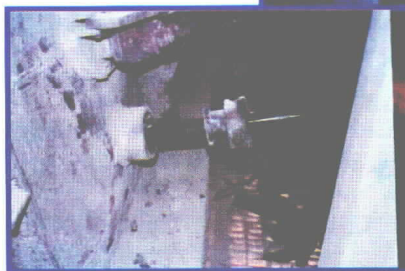
Safe operation

Cardox is safely operated from a safe distance outside of all areas of the processing line – so there is no need to expose workers to high heat or contaminated air. And there is no need to subject workers to the dangers of loosened material falling on them.

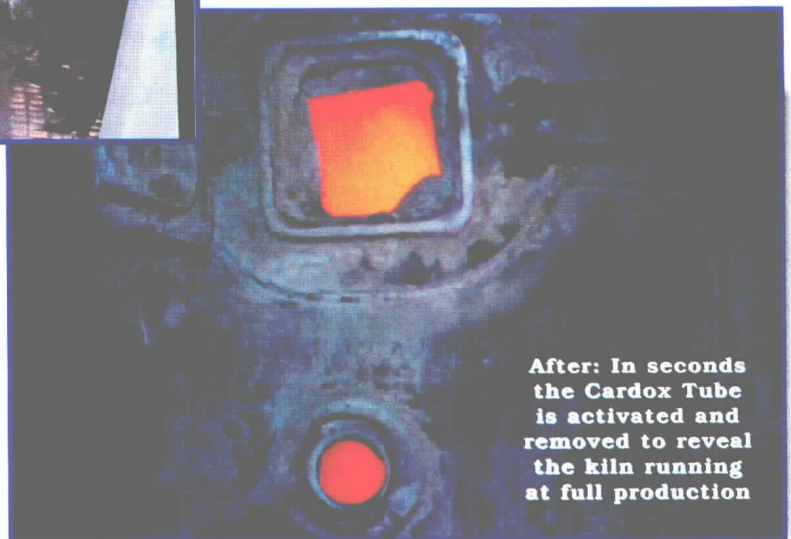
Other techniques, which might require the workers to operate equipment close to the material build-up, can expose the worker to a danger of flying debris or 'blow back' of debris. In this day and age, must employers not consider the safety of their workers as paramount?



Before: Opening inspection holes reveals build-up of cement



During: Cardox Tube is inserted into the build-up through special sockets



After: In seconds the Cardox Tube is activated and removed to reveal the kiln running at full production